

# The Potting Shed

November 2022

**The Master Gardener Newsletter for Kent and Sussex Counties, Delaware**



## **Master Gardener of the Month - Sussex County MG Lesley Holland**

Submitted By: Jessica Clark

Sussex County Master Gardener, Lesley Holland, sums up her gardening passion, "I like the connection between plants and family." Lesley, graduate of the Master Gardener class of 2019 – the last in-person class before COVID – spent her early childhood along with her sister, Laura, on Trap Pond in Laurel and then on a Delmar farm. Her father was a farmer, a pilot who built an airstrip and a hangar outside her parents' Bridgeville home, and a superintendent for Delaware parks. Her parents recently celebrated their 60th wedding anniversary.

Her maternal grandparents farmed in Laurel; her paternal great-grandparents in Milford. "Their self-sufficient farm provided everything needed to survive the Depression. There were crops, chickens, and hogs," she remembers. "Grandmother Bennett is 104 and still goes dancing," Lesley explains with a laugh. "I remember playing in the barn held together by pegs. Maybe over 200 years old? I would love to salvage the barn that has been dismantled and shipped to South Carolina." My mother, Hope, is also an avid

gardener, growing vegetables and flowers. "I get much of my passion for gardening from my mother."

She vividly remembers Grandmother Hudson, who was one of nine children, widowed when Lesley's mother was eight years old, and died when Lesley was six years old. "She grew zinnias and dahlias." While Lesley was teaching, a student brought her a bouquet of lilacs. The memories of her grandmother Hudson's lilacs blooming outside the kitchen door triggered happy memories.

Lesley, mother of two daughters and one son, for 32 years, was an elementary school art teacher, a fourth-grade teacher, then a library media specialist. Her second marriage blended three more children most of whom live in the area. Her daughter, Natalie, works for Central Park in New York City and daughter, Kayla, an RN, lives in Bridgeville. Son, Benjamin, is in training as a U.S. Marine Corps pilot. Lesley and her husband Barry share seven grandchildren, ranging in age from nine months to 12 years.

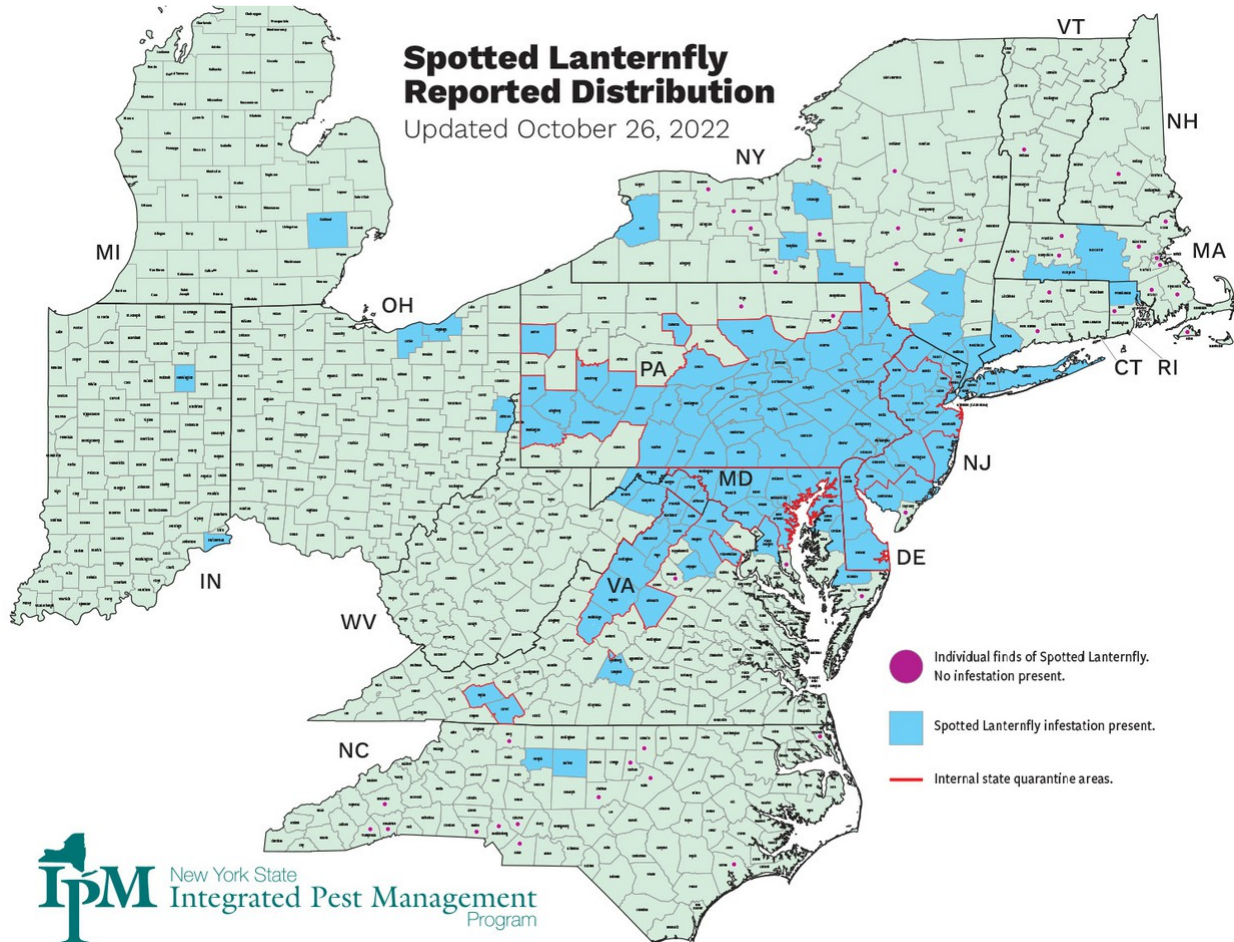
Lesley survived the death of a son who died after surgery for transposed arteries and in 2016, a head-on crash when a man drifted into her lane on a back road. She needed 20 stitches and the brain injury left her with balance and back problems and many months of visits twice a week to a Johns Hopkins Hospital doctor. After retirement in 2019, her passion for gardening bloomed more than ever. She grows cut flowers, roses, peonies, grapes, peaches, cherries, peaches, and other fruit trees, as well as orchids. Her favorite orchid is "Sharry Baby" which is currently in bloom and has the most heavenly scent. The perfect place to grow orchids, for her, is in a bathtub in her well-lit bathroom. They thrive in the humidity and light. When they are in bloom, she places them around her home for others to enjoy. She also arranges flowers for weddings and other events. When the bouquet for her niece's wedding froze in the hotel refrigerator, within two hours, Lesley produced a bouquet of wild flowers and the wedding commenced without any other hitches.

Lesley chairs the Cut Flower Garden and the Fairy Garden in the Sussex County Master Garden Demo Garden at the Carvel Center in Georgetown. "Lesley is one of the craftiest and creative people I know. She brought two fairy gardens to life to enhance some bare spots in the Children's Garden for our Open House which were a big hit. Beth Mills and I are so happy she will be joining us in the spring to co-chair the Children's Garden. I am looking forward to working with her," states Judy Pfister, Children's Garden Chair.

## **Sussex County November Monthly Meeting will be held on Thursday, Nov. 10**

\*UD and DSU Offices are Closed on Nov. 8 for Election Day.

The Sussex County Monthly Meeting and Demonstration Garden Work Day will be held on Thursday, Nov. 10.



**Additional information about this project at: [www.stopslf.org](http://www.stopslf.org)**

<https://www.stopslf.org/index.cfm>

## **Watch This Sussex County Presentation by UD's Dr. Barton and Tracy for 1.5 Advanced Training Hours**

Presentation by Dr. Susan Barton, Professor at the University of Delaware and Tracy Wootten, University of Delaware Horticulture Agent for Sussex County on "Creating a Yard that Benefits People and the Environment". To include tips on replacing lawns with native groundcovers, perennials, and shrubs which, along with trees, creates a better wildlife habitat.

This presentation qualifies for 1.5 hours of advance training credits.

<https://cityofrehoboth.civicweb.net/document/84691/?splitscreen=true>



## Coordinators Corner

### MG Awards Banquet

Awards banquet will be held on January 21st, 2023, at Plantation Lakes in Millsboro Delaware. More details will be presented soon. Please save the date!

### Master Gardener Elections

MG Elections for 2023 Elections are coming up and nominations are being accepted for the Kent County Executive Board and the Sussex County Advisory Council. Voting will be conducted during the November monthly meetings. If you are interested in running, please contact your county coordinator.

### UD and DSU Offices Closed

The DSU and UD Extension offices will be closed on November 8 for Election Day.

The DSU and UD Extension offices will be closed on November 24th and 25th for Thanksgiving.

### 2023 Committee Sign Up's

Please be thinking of what committees you would like to join in 2023. We will have sign up sheets ready after the November Monthly meetings. If you have any questions about the different committees, please let Megan or Tracy know.

### Thank you!

A special Thank you to all for entering your volunteer time on Better Impact. We could not do what we do without you. We cant wait to celebrate your achievements at our awards banquet.

### Flickr Account for Sussex and Kent County Master Gardeners

We have a shared Flickr Pro Account that we can use for both Kent and Sussex County Master Gardeners. This is a place we can house photos from our events, trips, etc. We are in the process of developing a system that we can use to upload photos, how things will be filed in folders, tags, etc. Michele Walfred is chairing the Sussex Photography Committee and will have a team of MGs from Kent & Sussex County that are trained to help upload and maintain this account for us. More information will be coming in the future.

### You can find photos from several recent events in google folders:

#### Nemours Estate and Garden Tour: October 20 -

[https://drive.google.com/drive/folders/1tzZFWAv76rAuDIIsqeOGhtcDhLdePb-gs?usp=share\\_link](https://drive.google.com/drive/folders/1tzZFWAv76rAuDIIsqeOGhtcDhLdePb-gs?usp=share_link)

#### Sussex County 4-H Haunted Trail in the Sussex Demonstration Garden - Oct 22

Those who want to see how the garden was decorated -

[https://drive.google.com/drive/folders/1r7W1rOhAZMwmqO3pm6uZ0HFDn19NEyEm?usp=share\\_link](https://drive.google.com/drive/folders/1r7W1rOhAZMwmqO3pm6uZ0HFDn19NEyEm?usp=share_link)

# Maggie's New Calendar for November 2022

By Maggie Moor-Orth

## ***For the First Week of November:***

- o Finish planting spring flowering bulbs.
- o Pull up disease-free annuals and add to compost pile along with leaves and leftover garden material.
- o Cut back and mulch perennials. This mulch will insulate them from the winter cold, and cutting them back will give them a tidy appearance.
- o Dig up dahlias, caladiums, gladiolus, etc. Wash away soil, dry, label and place in a bag or box; cover with sphagnum, moss, sawdust, or perlite. Store in a cool, dry place.

## ***For the Second Week of November:***

- o Pot amaryllis to have them bloom by winter.
- o Drain and bring in garden hoses and sprinklers to avoid freezing damage.
- o Transplant trees and shrubs after leaves have dropped.
- o Clean up *your vegetable* garden and plant cover crop to improve existing soil condition.
- o Prevent mice and rabbits from damaging young trees by wrapping the base of the trunk 18 inches high with screening.
- o Cut back roses 18 to 20 inches and mulch heavily to give them protection and help them survive the winter.

## ***For the Third Week of November:***

- o Fertilize shade trees and peach trees.
- o After frost has killed the leaf stalks on perennial vegetables like asparagus and rhubarb, cut leaf material down to ground level.
- o Mulch evergreens.
- o Do not store apples or pears with vegetables. These fruits give off a gas that speeds the ripening and breakdown of vegetables and will change their flavors.
- o To prevent winter windburn, thoroughly water all trees and shrubs weekly until the ground freezes.

## ***For the Last Week of November:***

- o After chrysanthemums have stopped blooming, cut the stems back to ground level and add these stems, dried leaves and branches to the compost pile.
- o After leaves have fallen, go into the woods and collect grapevines for making wreaths.
- o While in the woods, collect nuts, old bird nests, and pine cones to be used for decorating.
- o Pay careful attention to houseplants throughout the winter.
- o Check guy wires around newly planted trees to make sure they will not be damaged by windy weather throughout the fall and winter.



## **Any Podcast Listeners?**

Dr. Allan Armitage now creates short (less than 5 min) for his local NPR station. They can be caught here:

<https://www.wuga.org/people/allan-armitage>





## DuPont Environmental Education Center

Are you familiar with the DuPont Environmental Education Center?

<https://www.delawarenaturesociety.org/centers/dupont-environmental-education-center/>



## Latest edition of the Big Trees of Delaware

The latest edition of the Big Trees of Delaware, by the Delaware Forest Service, can be found at this link. Thanks to Lori Ennis for this fascinating publication.

[https://delawaretrees.com/bigtrees\\_delaware\\_5th\\_edition.pdf](https://delawaretrees.com/bigtrees_delaware_5th_edition.pdf)

## Into the woods | UDaily

INTO THE WOODS

Article by Lauren Bradford Photo by Monica Moriak | Video by Kate Zincone October 11, 2022

UD junior interns with Delaware Forest Service to track invasive insects

A long trek into the woods on a hot summer day followed by a diligent search for invasive beetles, some smaller than a grain of rice. Sound like fun? It was for University of Delaware junior Hannah Slesinski, a wildlife ecology and conservation major with a minor in environmental humanities, who ...

Catch the rest of this article at: <https://www.udel.edu/udaily/2022/october/delaware-forest-service-wildlife-ecology-conservation-internship/>



**HNP's UPDATED and IMPROVED RESOURCE DIRECTORY**

## HNP's UPDATED and IMPROVED RESOURCE DIRECTORY

- NATIVE PLANTS FINDER
- PURCHASING NATIVE PLANTS
- NON-PROFIT RESOURCES
- LANDSCAPING & DESIGN
- **(NEW!)** CONTAINER GARDENING W/ KEYSTONE PLANTS (*See what Christian Cooper has to say, below.*)
- (Coming soon) REMOVING INVASIVE SPECIES

Please use this link to explore these new resources at Homegrown National Park:

<https://homegrownnationalpark.org/find-your-resources>



## **Delaware MG Workshops**

### **Sussex Master Gardeners Workshop**

#### **1. Master Gardener Workshop: Putting Your Garden to Bed (Sussex)**

Tuesday, November 1, 2022, at 1:00 pm

[Carvel Center](#) Carvel Building, Georgetown

Master Gardener Cherie Dorfman will present this workshop. Get rid of debris and disease, learn how to clean up your garden, and prepare for the next growing season.

Register here: <https://forms.gle/e1HMqWkfdkAiBSAn6>

#### **2. Master Gardener Workshop: Composting is Easy (Sussex) Master Gardener Workshop:**

Composting is Easy (Sussex)

Tuesday, November 15, 2022 at 1:00pm

[Carvel Center](#) Carvel Building, Georgetown

Presented by Master Gardener Carol Kinsley. The formula: Mix or layer three parts "brown" (carbon sources) with one part "green" (nitrogen sources) in a container or a pile. As the pile grows, add a few shovelfuls of rich soil or compost. Keep it damp and aerated. Kinsley will share components of a healthy compost pile and describe how to set up a variety of structures to contain your compost. Your reward: black gold!

Register here: <https://forms.gle/e1HMqWkfdkAiBSAn6>

#### **3. Master Gardener Workshop: Snap It and App It Master Gardener Workshop: Snap It and App It**

Tuesday, November 29, 2022 at 7:00pm

Virtual Event

Digital photography is here to stay and there are so many applications that not only can correct common problems, but also transform photographs into works of art! UD photographer and Master Gardener Michele Walfred will share her "must-have" apps and the dazzling features available to make

your snapshots stunning! This workshop will concentrate on gardening, wildlife, birds and scenery, but the takeaways are useful for any type of photography!

Register here: <https://forms.gle/e1HMqWkfdkAiBSAn6>

### **KENT COUNTY MASTER GARDENER WORKSHOPS**

Fall has been busy with in-person workshops resumed! On October 3rd Debbie Nicol showed us how to help native bees with "Saving Our Native Bees – Build a Bee House." We had eight attendees at Paradee Center and another nine watching over ZOOM. Those who showed up in-person were able to assemble and take home their own bee houses.

Next up was "A Container Garden for Fall" on October 19th in-person only at SORC. Anita Smith demonstrated her container gardening expertise to our nine participants who then designed and created their own planters with thrillers, fillers, and spillers in a fall theme.

To close out fall, our ZOOM workshop "**The Joy of Flower Bulbs**" will be presented by Cheryl Fisher on **November 2nd at 2 PM**. Here she will talk about planting bulbs in fall for spring flowers. There are currently 39 registered for this online only class.

Thank you again to our volunteers Angela Collison, Kathy Doyle, Cheryl Fisher, Kate Ruffer, Zoe Bell, and Anita Smith for assisting and/or presenting at these workshops.

We have nothing more scheduled for 2022. Anyone interested in presenting a workshop in 2023 please contact Debbie Nicol.

## **ADVANCED TRAINING OPPORTUNITES!**



### **Creating meadows and Lawn Alternatives - 1.5 hrs Advanced Training**

Presentation by Dr. Susan Barton, Professor at the University of Delaware and Tracy Wootten, University of Delaware Horticulture Agent for Sussex County on "Creating a Yard that Benefits People and the Environment". To include tips on replacing lawns with native groundcovers, perennials, and shrubs which, along with trees, creates a better wildlife habitat.

This presentation qualifies for 1.5 hours of advance training credits.

<https://cityofreboth.civicweb.net/document/84691/?splitscreen=true>

### **Ornamental & Turf Workshop - November 15**

Ornamental & Turf Workshop will be held on Tuesday, November 15th at Hockessin Memorial Hall. Topics are as follows: \* BMP's to Combat the Fungus Amongus \* Integrating Bulbs into the Landscape \* Native Alternatives to Invasive Ornamentals \* Ornamentals Hotline - The Year in Review and a \* Roadtrip: Tour of Stonegates in Greenville, DE

3 Delaware pesticide applicator recertification credits will be awarded for Category 03. Credits for PA, MD & ISA will also be available. 1 CNP CEU available • To access the brochure,

[https://dnlaonline.org/wp-content/uploads/2022/10/22\\_Turf\\_Regis\\_Brochure.pdf](https://dnlaonline.org/wp-content/uploads/2022/10/22_Turf_Regis_Brochure.pdf)



To register and pay via a credit card visit <https://2022dnlaturfworkshop.eventbrite.com> DO NOT use Internet Explorer • \* Master Gardeners may register at the DNLA Membership Price\*

## Save the Date - January 18 & 19, 2023 - Delaware Horticulture Industry Expo

DE Horticulture Industry Expo will be held January 18 & 19 at the Modern Maturity Center in Dover. We've got exhibitors, great speakers, and yes...the roast beef lunch. More information to follow.

\*Master Gardeners may register at the DNLA Membership Price\*



UNIVERSITY OF DELAWARE  
**BOTANIC GARDENS** 

Looking for a unique and personal holiday gift? Leaf prints are a fun and easy way to create beautiful notecards, thank you notes, or prints for framing. No experience required! Workshop includes any combination of 8 pieces (excludes 12x12 sheets).

Additional stationery and 12x12 sheets will be available for purchase at the workshop.

**Space is limited and registration is required.**

To learn more about the garden and any of the programs above, click the link below.

<https://canr.udel.edu/udbg/events/>





## Penn State Extension Opportunities

1. Do you miss your garden in winter and want to get your hands back in the soil? Do you want to get a head start on next year without spending too much money? **Second Saturday Gardening Series:**

**Winter Sowing** will teach an easy seed-starting method and jump-start your 2022 garden!

**Format:** *On-Demand Webinar*

**Available Until:** Jan. 24, 2023

**Registration and Information at:** <https://web.cvent.com/event/c4c99f9a-ae7-4efc-9513-aa660108dfd1/summary>

2. Join us for **Know Your Natives: Shrubs for gardeners** to learn about eight species of pollinators that will make any garden look great and create an essential pollinator habitat. Native shrubs for pollinators are often overlooked in the planning stages or on recommended plant lists. We will discuss the value and benefits pollinator-friendly gardens have to offer.

**When:** Wed., Nov. 2, 2022, 7:00 PM - 8:00 PM ET

**Format:** Live Online via Zoom

**Registration and Information at** <https://web.cvent.com/event/2e6e789a-178a-4375-9999-53b34dc32a6d/summary>

3. During **Know Your Natives: Under-Appreciated Plants**, we will discuss options of Pennsylvania native plants to consider adding to your landscape to increase plant biodiversity and maximize wildlife benefit. Native milkweeds have recently dominated the conservation gardening conversation because monarch butterflies depend upon them. However, did you know that Pennsylvania has over 2000 native plants that are needed in addition to milkweeds to support a wide variety of insects, birds, and animals? You will learn about all of this and more during this informative event!

**When:** Wed., Nov. 9, 2022, 7:00 PM - 8:00 PM ET

**Format:** *Live Online via Zoom*

**Registration and Information at:** <https://web.cvent.com/event/71cbde13-79d5-430c-b46a-8d4c6e7f04d3/summary>

4. The vast majority of landowners have small woodlots less than 10 acres in size. **Woods in Your Backyard Series** is designed specifically, but not exclusively, for smaller landscapes. Join us to learn how landowners can positively influence the environment by implementing simple stewardship practices.

**When:** 7:00 PM - 8:30 PM ET

Wednesdays

- Jan. 11, 18, & 25 2023
- Feb. 1, 8, 15, & 22, 2023
- Mar. 1 & 8, 2023

**Format:** Live Online via Zoom

**Registration and Information at:** <https://web.cvent.com/event/200f85e9-e7f2-4b5f-a094-c8e4b61aa4e8/summary>

## Too many to mention-

There are numerous webinars on many topics which can be viewed here  
<https://extension.psu.edu/trees-lawns-and-landscaping/home-gardening>

## NPSNJ FALL VIRTUAL CONFERENCE IS HERE!

Native Plant Society of New Jersey Fall Conference 2022  
**Native Plants: Sustaining & Restoring Life**



**Saturday, November 5th**

**9:30AM - 3:30PM**

[Register Here Today!](#)

[https://us02web.zoom.us/webinar/register/1816654297321/WN\\_oxhT6mJLQ2O4jjFJJE6Svg](https://us02web.zoom.us/webinar/register/1816654297321/WN_oxhT6mJLQ2O4jjFJJE6Svg)

**The only way to see their presentation is to watch it live!**

## LONGWOOD GARDENS

### Longwood Gardens Online Learning Opportunities

#### Plantology on Tap: A Longwood Christmas

Longwood at the Creamery. Get a behind-the-scenes look at the magic of A Longwood Christmas and explore the year-long process that goes into making this one-of-a-kind display possible.

- NOVEMBER 17, 2022 AT 6 PM

#### Seed Saving 101

- November 9
- 6–8 pm
- Register by November 6
- Learn why seed saving is important for the environment and our communities, and how to set yourself up for seed-saving success.

#### Discovering Winter Resident Birds

- Online Session: November 14, 6–7:15 pm
- Onsite Session: November 16, 9–11 am
- Register by November 10
- During this talk-and-walk experience, learn how to recognize regional winter resident bird species and see these beauties in the Longwood landscape.

#### Sweet Floral Treats: Pumpkin Pie

- Fully Online
- November 15
- 6–8 pm

- Register by November 13
- Learn how to grace your Thanksgiving table with not only a classic centerpiece of warm autumnal hues and blooms—but also a delicious pumpkin pie.

#### **Bountiful Beginner Thanksgiving Centerpieces**

- November 19
- 9:30–11:30 am
- Register by November 10
- Create a Thanksgiving centerpiece that bursts with fall color and dramatic texture in this fun, beginner floral design class.

**Discover your next learning adventure at [longwoodgardens.org/enroll](https://longwoodgardens.org/enroll).**

Additional online Continuing Education classes and workshop information is available here:

<https://longwoodgardens.org/education/online-learning>

Information and registration for the following workshops can be found at this link:

[https://longwoodgardens.org/education/continuing-education?utm\\_source=newsletter&utm\\_medium=email&utm\\_content=Enroll&utm\\_campaign=October%20CE%20Classes%20-%20Conditional](https://longwoodgardens.org/education/continuing-education?utm_source=newsletter&utm_medium=email&utm_content=Enroll&utm_campaign=October%20CE%20Classes%20-%20Conditional)

\* Note fees apply for some.

## **Xerces Events**

Free Online Short Course!



Farming with Soil Life -

Soil Animals and Microbial Processes - New York/Northeast Region

Nov 9

9:00 AM - 1:00 PM (Eastern Time)

Online

Join Xerces staff Stephanie Frischie, Agronomist & Native Plant Materials Specialist; Jennifer Hopwood, Senior Pollinator Conservation Specialist - Midwest; and Kelly Gill, Senior Pollinator Conservation Specialist - Northeast/Mid-Atlantic, and guest presenter Kyle Wickings, Associate Professor of Entomology at Cornell University, for this online course about soil animals and their role in governing microbial processes in agricultural soils. Participants will learn about common soil invertebrates, their ecology and roles in soil health, scouting methods, and management strategies to increase beneficial soil animal populations. This online short course is free to attend and is intended for NRCS staff, Soil and Water Conservation staff, Extension Educators, farmers and other agricultural professionals in the northeastern region of the US.

[Click here](#) for more information and to register.

Please follow the link below for a number of Xerces-supported webinars on many topics

<https://xerces.org/events>

## **UVM Extension Master Gardener Annual Conference**

## UVM Extension Master Gardener Annual Conference

**Date:** Saturday, December 3, 2022

**Time:** 9:30 AM - 3:00 PM

**Location:** Virtual

At this year's conference, we welcome keynote speakers Drs. Doug Tallamy and Ann Hazelrigg who will share their expertise on insects, diseases and the amazing ecosystems of our Vermont gardens. We will also learn from one another through our shared experiences of fellow Extension Master Gardeners (EMG) and other garden enthusiasts.

Be sure to take advantage of our early bird conference rate of \$25 for EMGs (and Vermont Master Composters) and \$40 for all others if you register before Nov 19. (Regular registration is \$40 for EMGs/VMCs and \$55 for others.) Registration closes at 5:00 PM on December 1, 2022.

Thanks to Interpreter Services provided by the UVM Center for Academic Success, all plenary sessions at the conference will be live captioned.

### Registration

Please register online at: <https://na.eventscloud.com/extgardeningconference>.

## Yale Forest Forum

### FALL EVENTS

The **Yale Forest Forum** is hosting two fall 2022 speaker series:

- Tuesdays, September 6-December 6, 11:30 am – 12:10 pm U.S. ET: [\(Re\)Considering Planted Forests for the 21st Century](#)
- Thursdays, September 8-December 8, 11:30 am – 12:10 pm U.S. ET: [What Makes a High-Quality Forest Carbon Credit?](#)

October 17-November 2: [Online Short Course: Tropical Forest Restoration & Agroforestry](#) offered by ELTI.

In addition, please explore their Forest-Related Centers, Programs, & Initiatives at <https://yff.yale.edu/news/centers-programs>



# INTERNATIONAL MASTER GARDENER CONFERENCE 2023

---

**Early-bird registration opens on Nov. 8, 2022**, for the 2023 International Master Gardener Conference on June 18-22, 2023 in Overland Park, Kansas. The special **early-bird rate of \$397 for basic conference registration ends March 1, 2023.**

Please follow this link for additional information: <https://imgc2023.com/conference-planner/>



**DELAWARE STATE  
PARKS**  
YOUR OUTDOOR ADVENTURE STARTS HERE

Annual passes are expected to go on sale in December.

The information can be found on the website at: <https://destateparks.com/Know/PassesTagsFees>

Be sure to check out their seasonal adventure offerings too!



## Sussex November Date Change

A friendly reminder that the Sussex MG **November** Monthly Meeting falls on Election Day this year. Please note the date change to **Thursday, Nov. 10** at 9 a.m. Social and 9:30 a.m. Meeting begins. Please mark your calendars appropriately

## Sussex County Monthly Meeting

When

Thursday, Nov. 10th, 9am

Where

16483 County Seat Highway Georgetown, DE

More information

Join us IN PERSON for our November Monthly Meeting. A hybrid meeting link will be available for those who can not attend in -person.

## Kent County Monthly Meeting

When

Tuesday, Nov. 15th, 9am

Where

69 Transportation Circle Dover, DE

## Delaware Cooperative Extension - Delaware State University & University of Delaware

Please send your contributions to The Potting Shed Tracy, Megan, or Karen at the contact information

- Tracy Wootten, Extension Agent - Horticulture [wootten@udel.edu](mailto:wootten@udel.edu) 302.856.7303 (office) or 302.236.0298 (cell)
- Megan Pleasanton, Kent & Sussex Coordinator [mpleasanton@desu.edu](mailto:mpleasanton@desu.edu) 302.857.6438 (office) or 302.242.5692 (cell)
- Karen Abate, Editor [ksabate@aol.com](mailto:ksabate@aol.com) 732.300.2167 (cell)

## **Delaware Master Gardeners**

Master Gardeners are working volunteers and are supported by Delaware Cooperative Extension through the University of Delaware and Delaware State University Extension offices. It is Delaware Cooperative Extension's policy that no person shall be subjected to discrimination on the grounds of race, creed, color, sex, age, religion, national origin, sexual orientation, veteran or handicap status. If you have special needs that need to be accommodated, please contact the office two weeks prior to the event.

Cooperative Extension Education in Agriculture and Home Economics, University of Delaware, Delaware State University and the United States Department of Agriculture cooperating. Distributed in furtherance of Acts of Congress of May 8 and June 30, 1914.

It is the policy of the Cooperative Extension Service, University of Delaware, that no person shall be subjected to discrimination on the grounds of race, color, sex, disability, age or national origin.